

Replacing Icon Circuit Board

The following parts are provided for replacing Icon's circuit board:

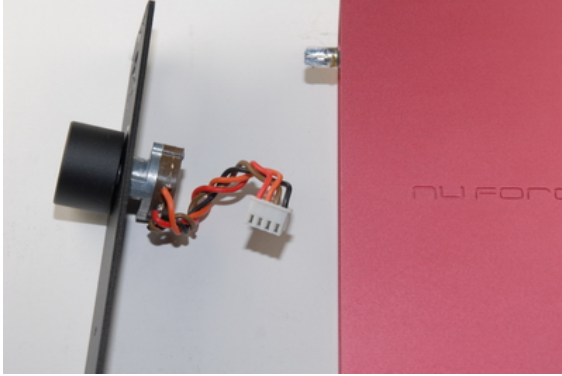
- Volume control knob (this is optional)
- Screws
- Circuit board with back panel
- Front panel with selector switch (this is optional and your replacement board might not include the front panel)



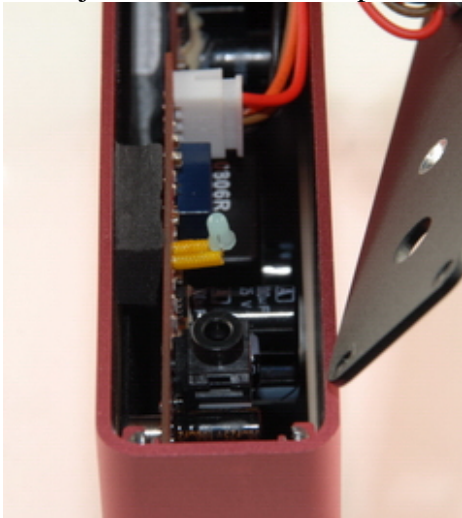
- 1) Try to pull out the volume control knob with your hand (don't twist it). If it is too tight, use a screw driver to pry loose the volume control knob. Be careful not to scratch the Icon casing or the front panel. Wrap the tip of the screw driver with a few layers of shipping tape to prevent it from scratching the front panel. Leverage the screw driver against the front panel.



- 2) Remove the front and back panel screws. Gently pull out the front panel and unplug the selector switch cable.



- 3) Remove the circuit board and insert the replacement board. You might have to adjust the LED to line up with the LED hole on the front panel



- 4) Attach the front panel. You might have to arrange the selector switch cables so that it will fit inside Icon



- 5) Screw the Icon's front and back panels in place